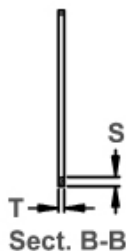
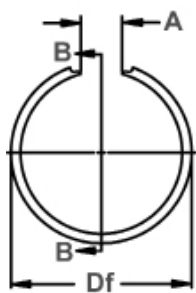


开孔用同心型扣环

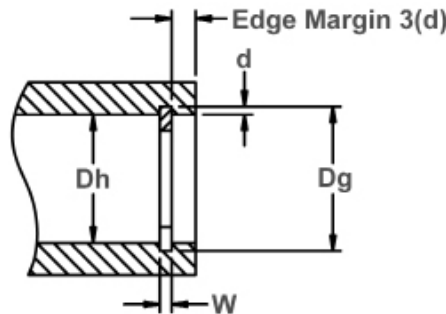
用于固定滚针轴承开孔用同心型扣环

当扣环置于适用的孔内沟槽时，从沟槽露出的扣环部分可固定和防止零件移动。

HN 同心型扣环



自由直径&扣环尺寸
B-B 横断面图



开孔直径&沟槽尺寸

原材料: SAE 1060-1075

扣环 编号	开孔直径			沟槽尺寸				扣环尺寸						允许 静止时 受力 (Lbs.)	
				沟槽直径		沟槽宽度 W	深度 d	自由直径		板厚		板幅			自由间隙直径
	Dh DEC	Dh FRACT.	Dh mm	Dg	公差			Df	公差	T ±.002	S	公差	A 最小		A 最大
HN-112	1.125	1-1/8	28.58	1.181	±.005	.046	.028	1.196	+.031 -.000	.042	.093	±.003	.375	.562	1100
HN-125	1.250	1-1/4	31.75	1.310			.030	1.330		.042	.093		.375	.562	1360
HN-137	1.375	1-3/8	34.93	1.435			.030	1.460		.042	.093		.375	.562	1600
HN-150	1.500	1-1/2	38.10	1.580			.040	1.600		.042	.125		.375	.562	1900
HN-162	1.625	1-5/8	41.28	1.705			.040	1.725		.042	.125		.437	.750	1930
HN-175	1.750	1-3/4	44.45	1.830			.040	1.855		.042	.125		.437	.750	1960
HN-187	1.875	1-7/8	47.63	1.965			.045	1.990		.042	.156		.437	.750	2090
HN-200	2.000	2	50.80	2.090		.045	2.115	.042	.156	.437	.750		2200		
HN-206	2.062	2-1/16	52.37	2.152		.045	2.177	.042	.156	.437	.750		2340		
HN-218	2.187	2-3/16	55.55	2.277		.045	2.302	.042	.156	.437	.750		2700		
HN-231	2.312	2-5/16	58.72	2.402		.045	2.432	.042	.156	.437	.750		2900		
HN-243	2.437	2-7/16	61.90	2.527		.045	2.557	.042	.156	.437	.750		3000		
HN-256	2.562	2-9/16	65.07	2.652		.045	2.682	.042	.156	.437	.750		3200		
HN-300	3.000	3	76.20	3.124		±.006	.062	3.154	.062	.187	±.005		.562	.938	6250
HN-325	3.250	3-1/4	82.55	3.374	.068		.062	3.404	.062	.187		.562	.938	6500	
HN-350	3.500	3-1/2	88.90	3.624	.062		3.654	.062	.187	.562		.938	6700		
HN-375	3.750	3-3/4	95.25	3.874	.062		3.904	.062	.187	.562		.938	6100		
HN-400	4.000	4	101.60	4.125	.062		4.155	.062	.187	.562		.938	7000		
HN-425	4.250	4-1/4	107.95	4.394	.072		4.429	.078	.218	.625		1.062	9100		
HN-450	4.500	4-1/2	114.30	4.644	.086		.072	4.679	.078	.218		.625	1.062	9400	
HN-475	4.750	4-3/4	120.65	4.894	.072		4.929	.078	.218	.625		1.062	9200		
HN-500	5.000	5	127.00	5.144	.072		5.184	.078	.218	.625		1.062	9000		
HN-525	5.250	5-1/4	133.35	5.394	.072		5.434	.078	.218	.625		1.062	8800		
HN-575	5.750	5-3/4	146.05	5.894	.072	5.934	.078	.218	.625	1.062	8950				
HN-600	6.000	6	152.40	6.160	±.007	.080	6.220	.093	.250	.875	1.437	9000			
HN-650	6.500	6-1/2	165.10	6.660		.103	.080	6.730	.093	.250	.875	1.437	7500		
HN-700	7.000	7	177.80	7.160		.080	7.240	.093	.250	.875	1.437	6200			
HN-725	7.250	7-1/4	184.15	7.410		±.008	.000	.080	7.500	.093	.250	1.000	1.750	6100	
HN-750	7.500	7-1/2	190.50	7.660			.080	7.760	.093	.250	1.000	1.750	6000		
HN-800	8.000	8	203.20	8.160			.080	8.285	.093	.250	1.000	1.750	5700		

单位: inch

如需了解备用前端部设计，请与我们联系。E-mail: china@rotorclip.com



如需了解最新的产品规格，报价，样品申请及网上订购，请访问 www.rotorclip.cn